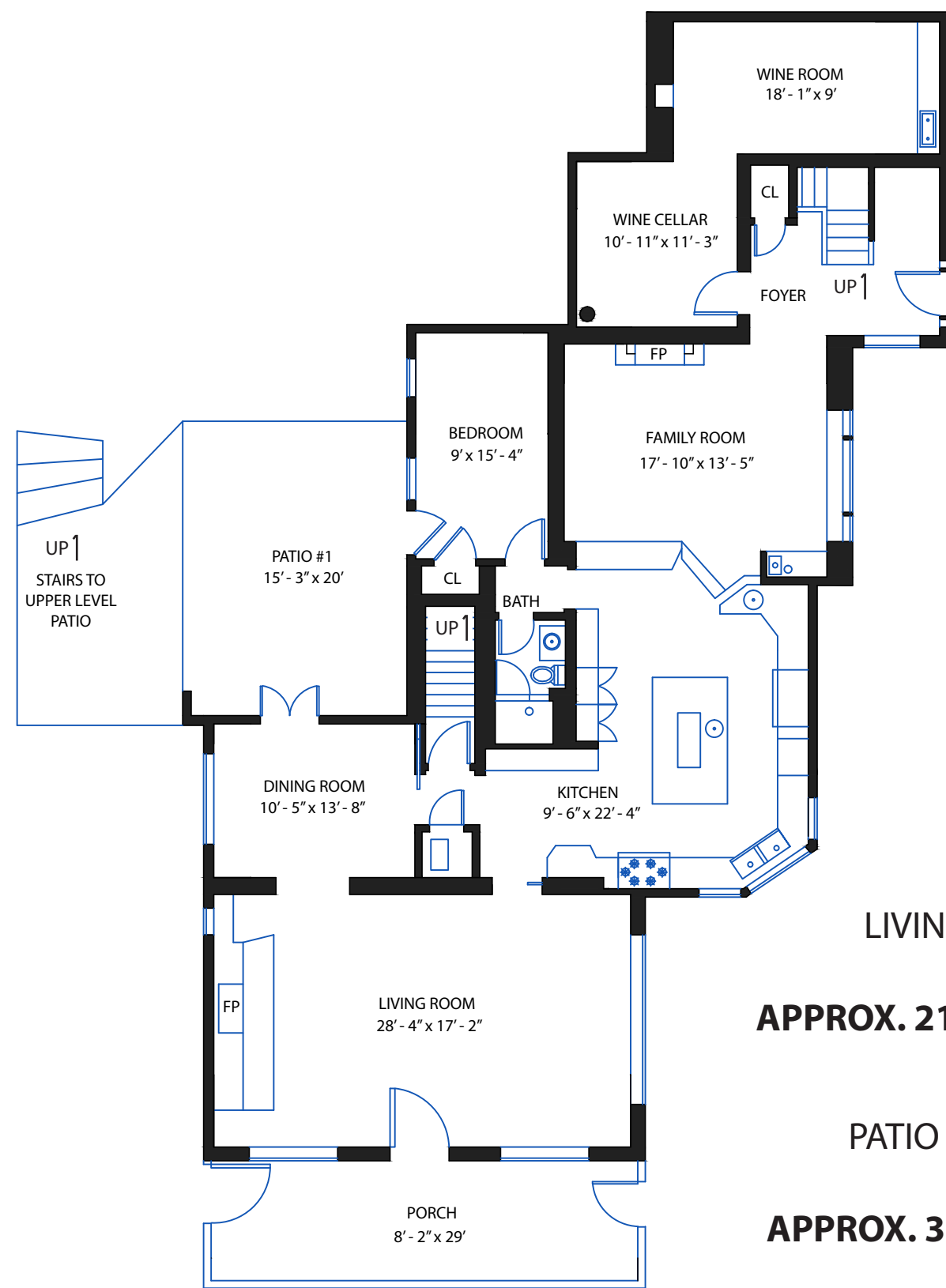
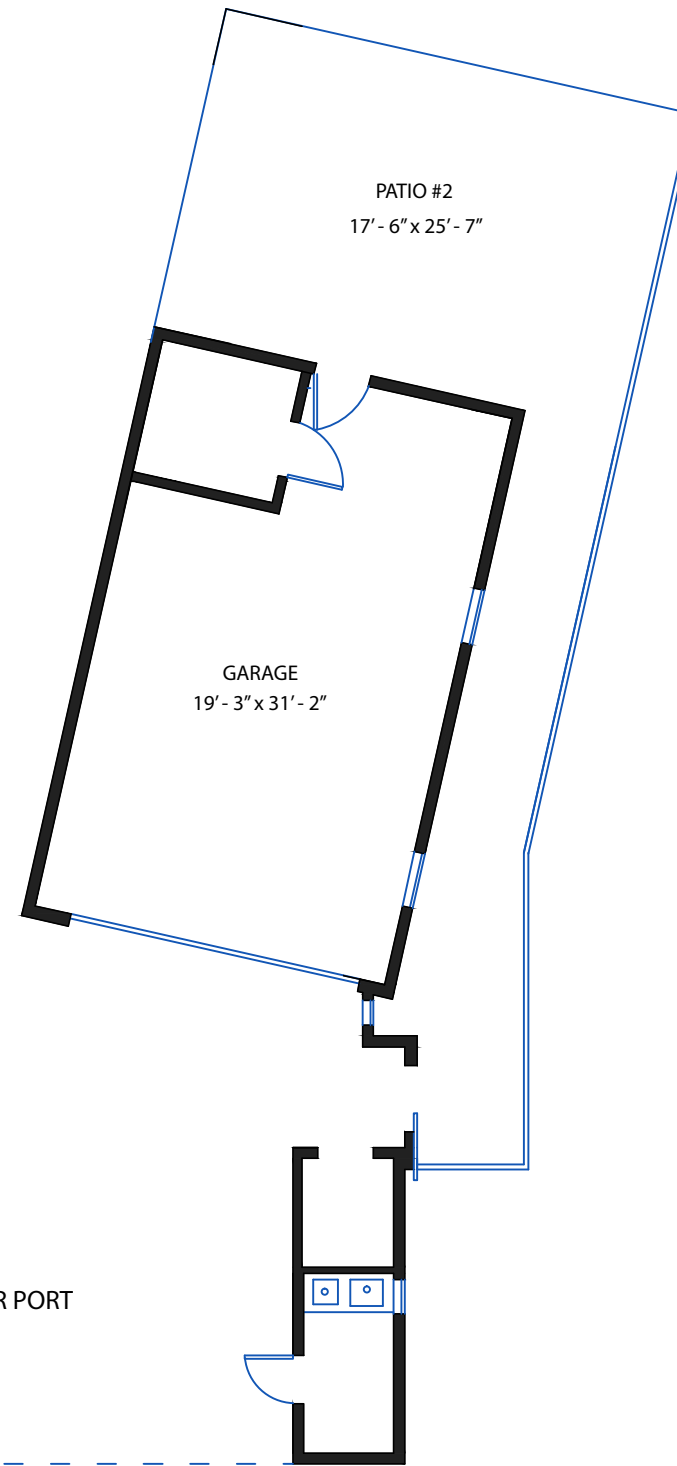


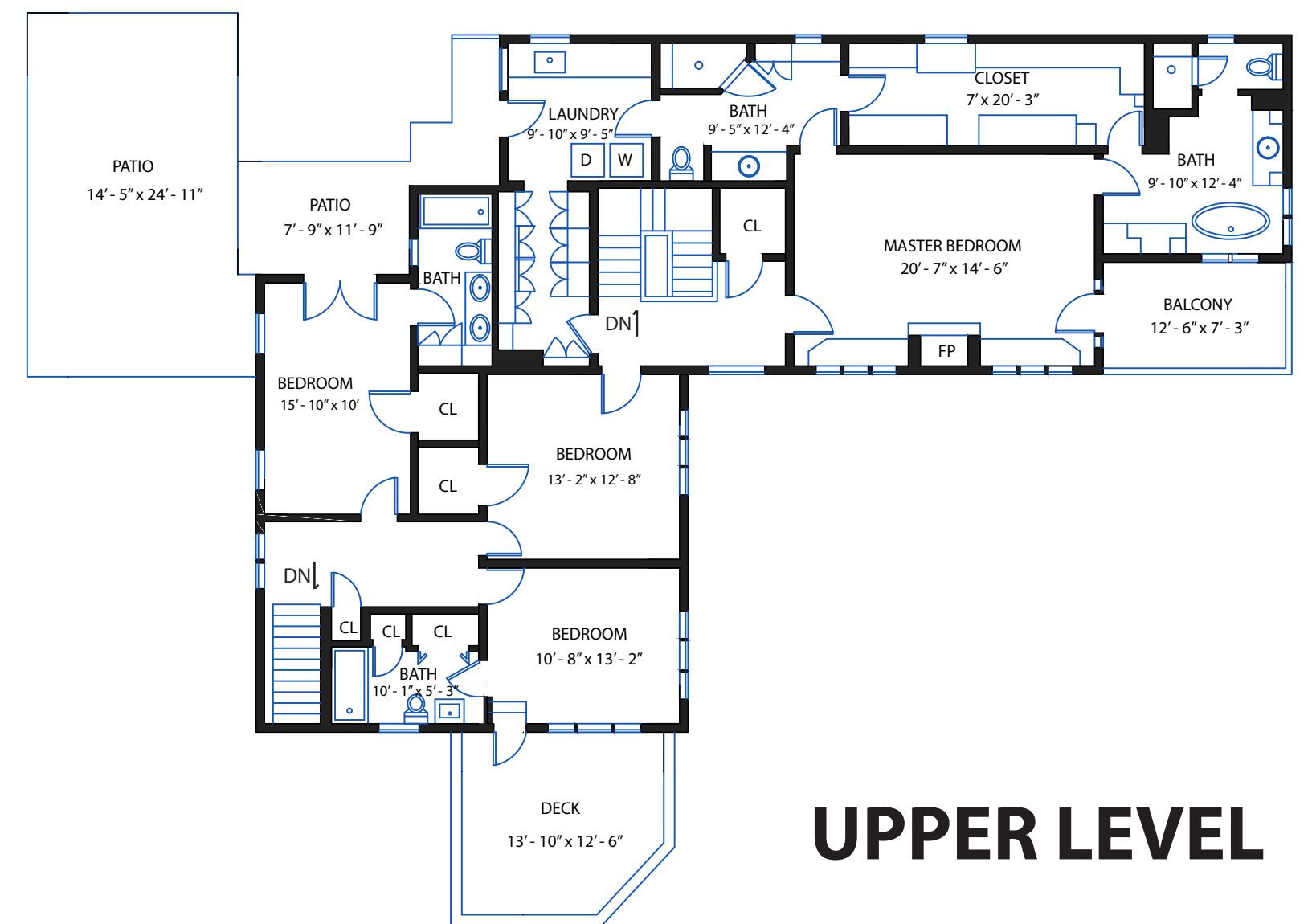
1599 Hillgrade Ave

Alamo, CA 94507



MAIN LEVEL

LIVING	GARAGE	PORCH
APPROX. 2110 SQF	APPROX. 600 SQF	APPROX. 235 SQF
PATIO #1		PATIO #2
APPROX. 300 SQF		APPROX. 440 SQF



UPPER LEVEL

LIVING	DECK
APPROX. 1900 SQF	APPROX. 173 SQF
PATIO	BALCONY
APPROX. 450 SQF	APPROX. 90 SQF

Estimated Total Finished Square Footage: 4010 Sq Ft*

~ Main Level 2110 Sq Ft

~ Upper Level 1900 Sq Ft

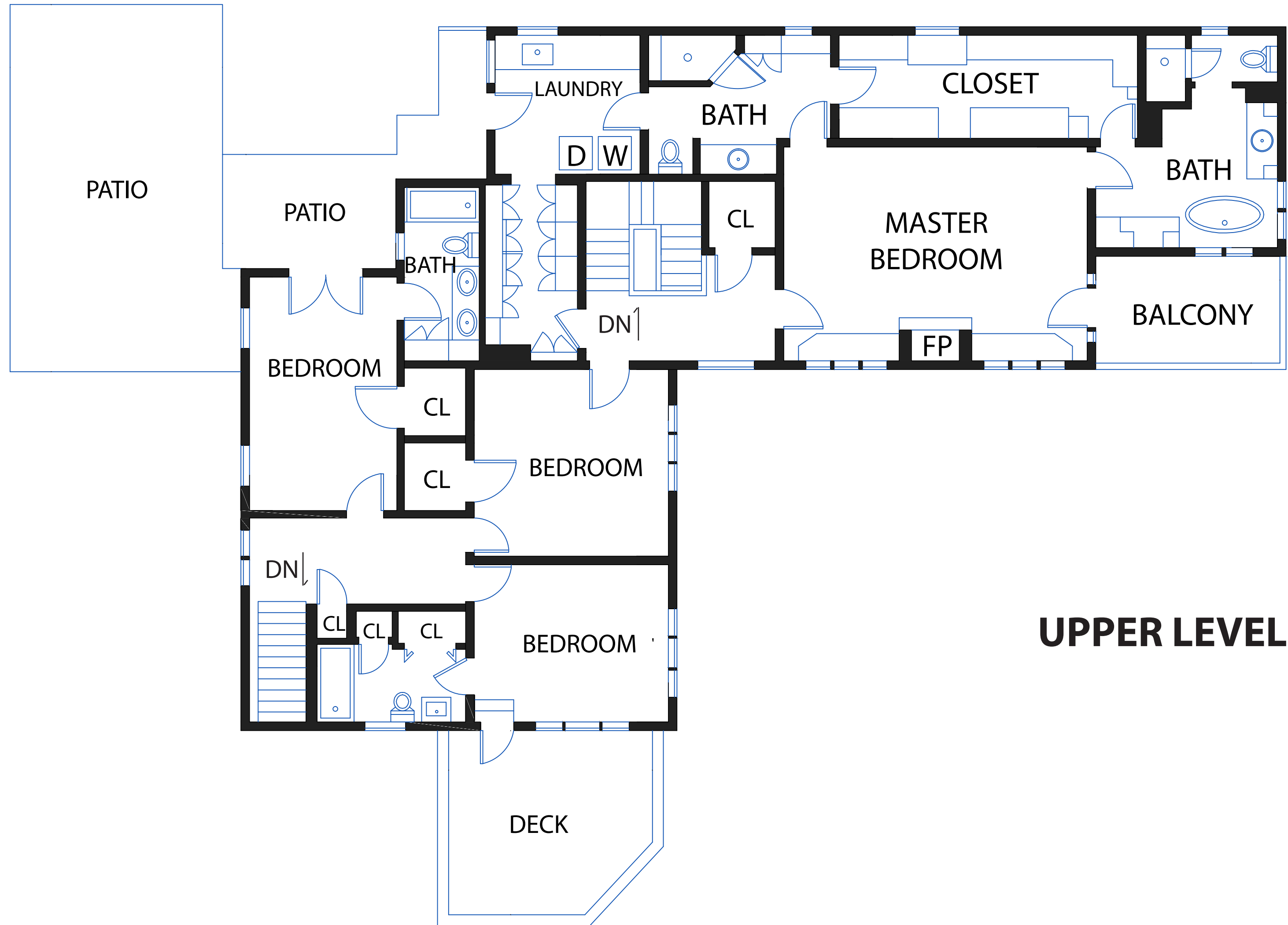
Estimated Total Unfinished Square Footage: 600 Sq Ft*

~ Garage 600 Sq Ft

Estimated Total Finished & Unfinished Square Footage: 4610 Sq Ft*

Rendered by Open Homes Photography. *Floor plans, square footage and dimensions are approximate and not for construction purposes. Prospective buyers should not rely on these floor plans, square footage and dimensions in making their purchase decision and should independently verify the above items and all other information herein.

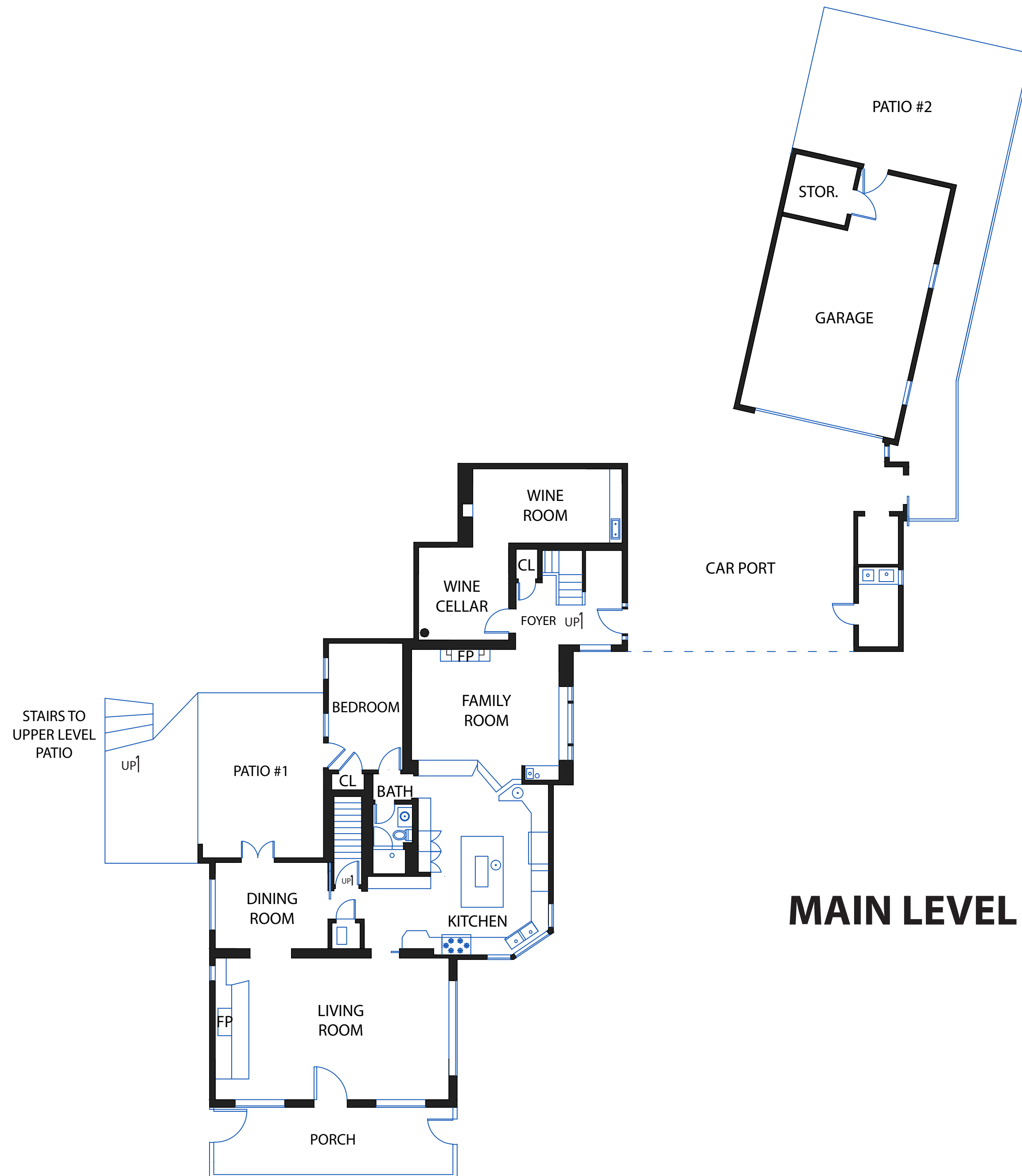
1599 HILLGRADE AVENUE



UPPER LEVEL

NOTE: FLOOR PLANS, SQUARE FOOTAGE, AND DIMENSIONS ARE APPROXIMATE AND NOT FOR CONSTRUCTION PURPOSES. PROSPECTIVE BUYERS SHOULD NOT RELY ON THESE PLANS, SQUARE FOOTAGE, AND DIMENSIONS IN MAKING THEIR PURCHASE DECISION AND SHOULD CAREFULLY VERIFY THE ABOVE ITEMS AND ALL OTHER INFORMATION HEREIN.

1599 HILLGRADE AVENUE



MAIN LEVEL

NOTE: FLOOR PLANS, SQUARE FOOTAGE, AND DIMENSIONS ARE APPROXIMATE AND NOT FOR CONSTRUCTION PURPOSES. PROSPECTIVE BUYERS SHOULD NOT RELY ON THESE PLANS, SQUARE FOOTAGE, AND DIMENSIONS IN MAKING THEIR PURCHASE DECISION AND SHOULD CAREFULLY VERIFY THE ABOVE ITEMS AND ALL OTHER INFORMATION HEREIN.